



SOCIETE D'ETUDES
INDUSTRIELLES DU CENTRE
17 allée Evariste Galois
18000 BOURGES
T : 02 48 50 44 22
accueil@seic18.fr

MAIRIE DE ST DOULCHARD

Avenue du Général de Gaulle
18230 Saint Doulchard

Réhabilitation de la résidence Hector Bernard

21 rue des Bougnoux
18230 Saint Doulchard

VISA

ECHELLE

DATE 25/02/2021

REF

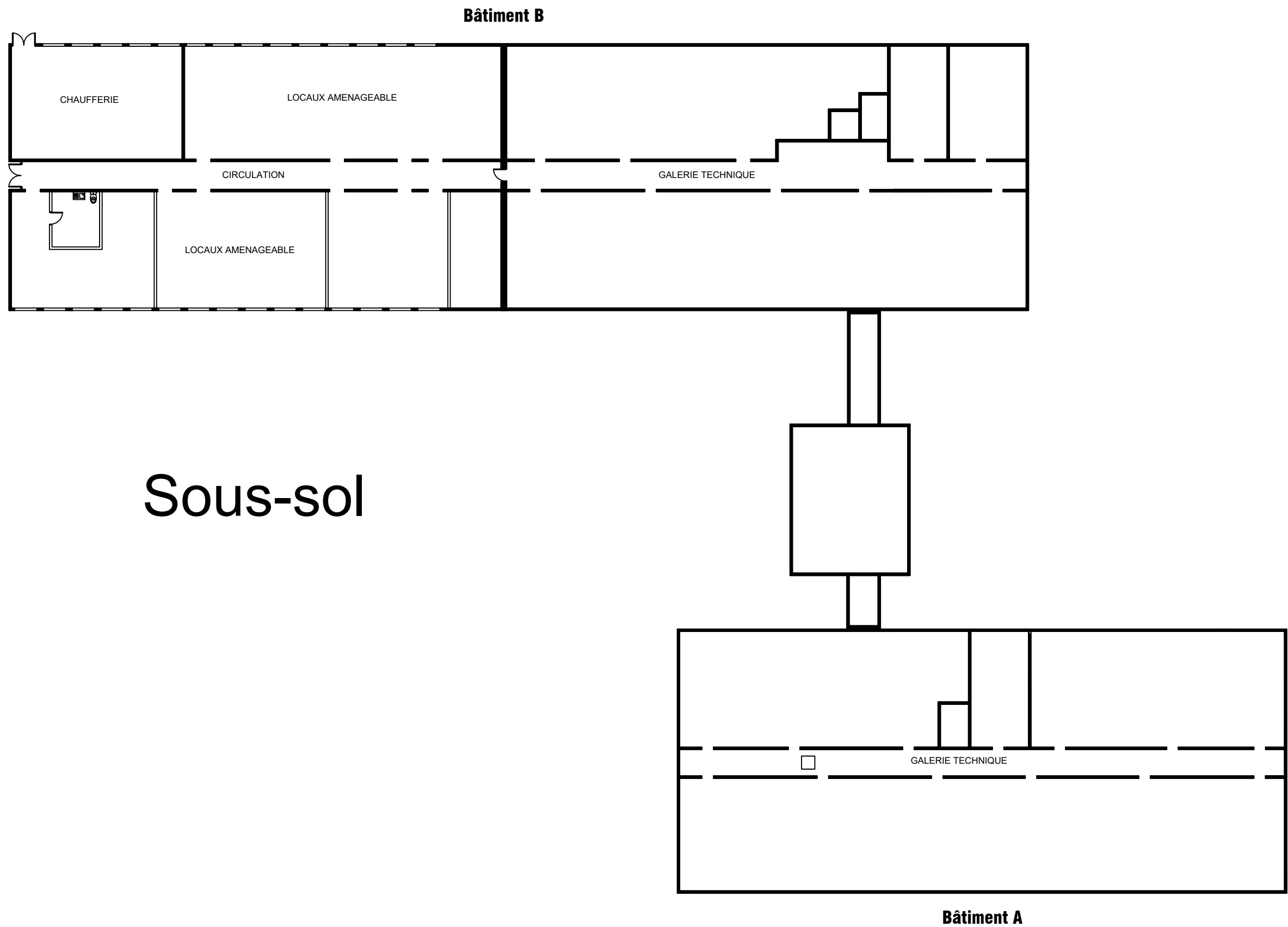
N° DOSSIER 20-058

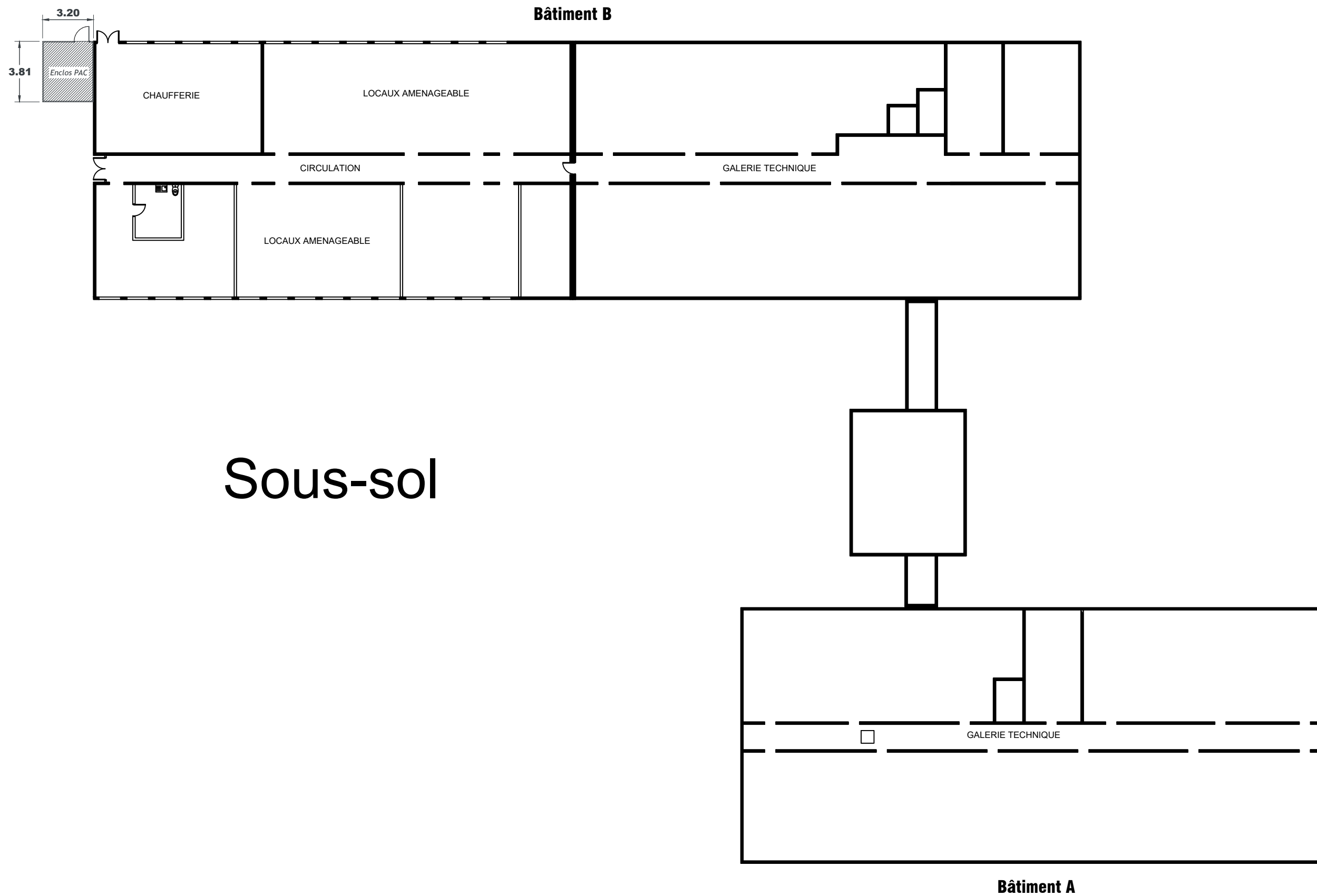
CARNET DE PLANS

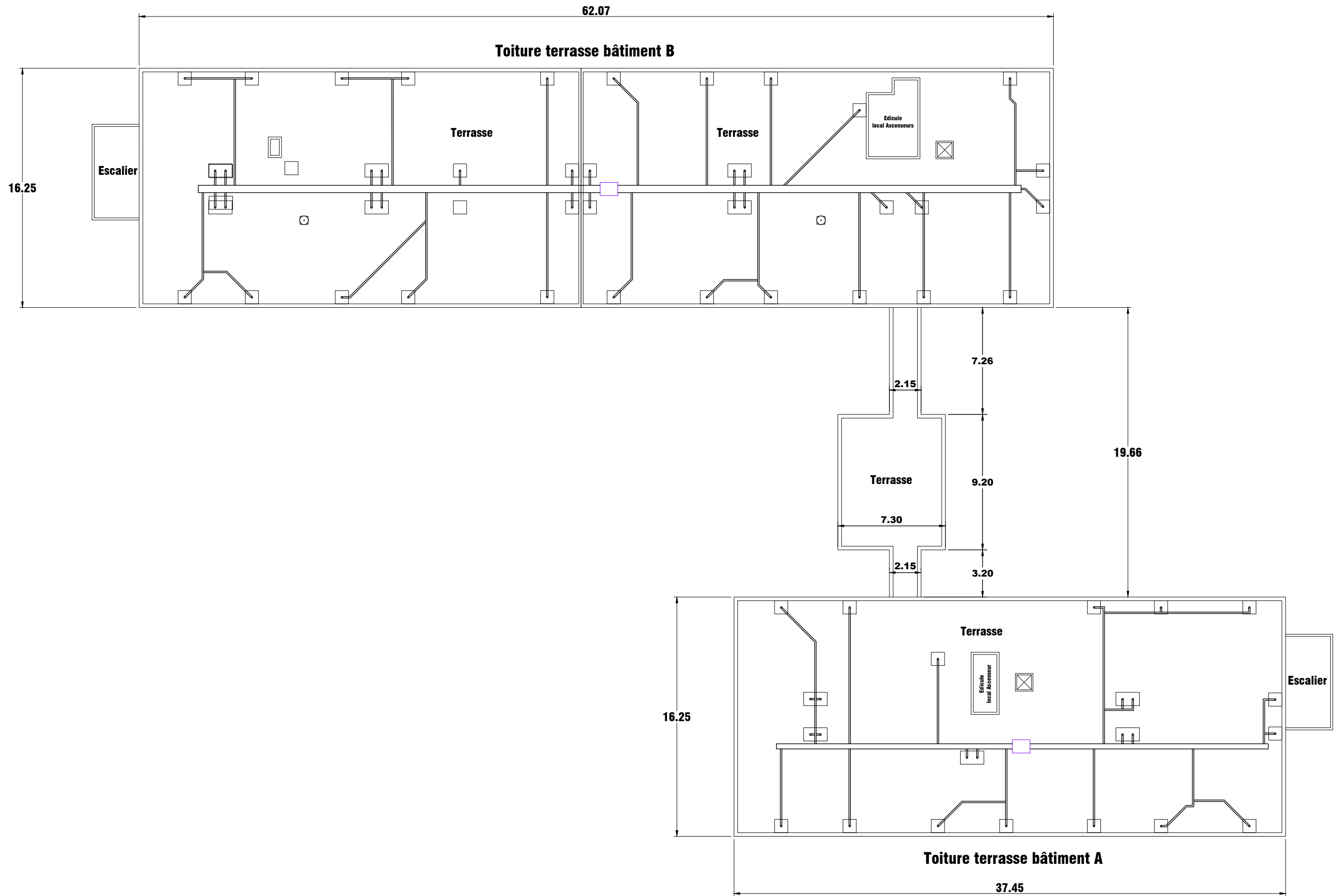
SA au capital de 150 000 € - RCS Bourges 663 720 373 - APE 71 12B

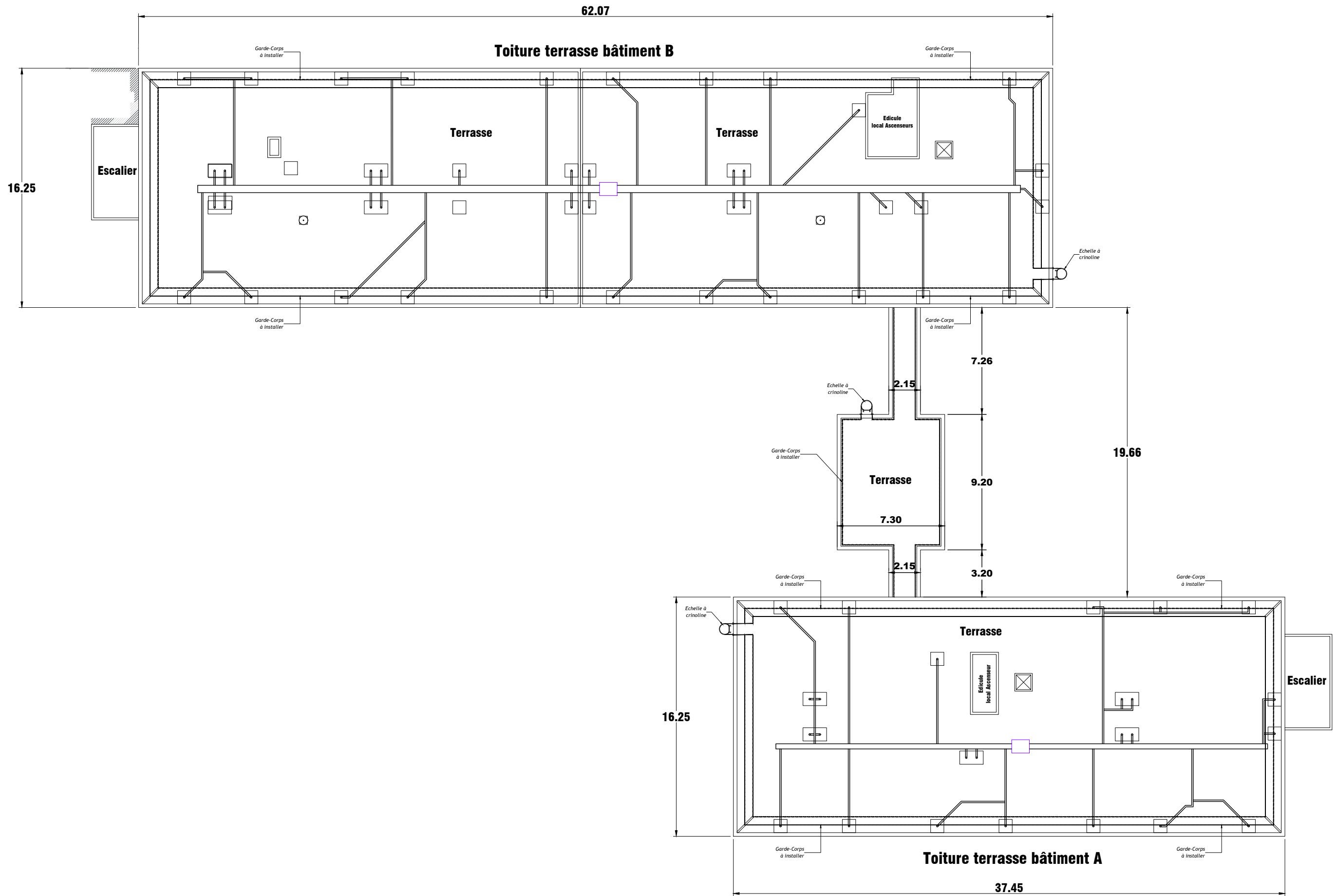
TOUS DROITS DE REPRODUCTION INTERDITS

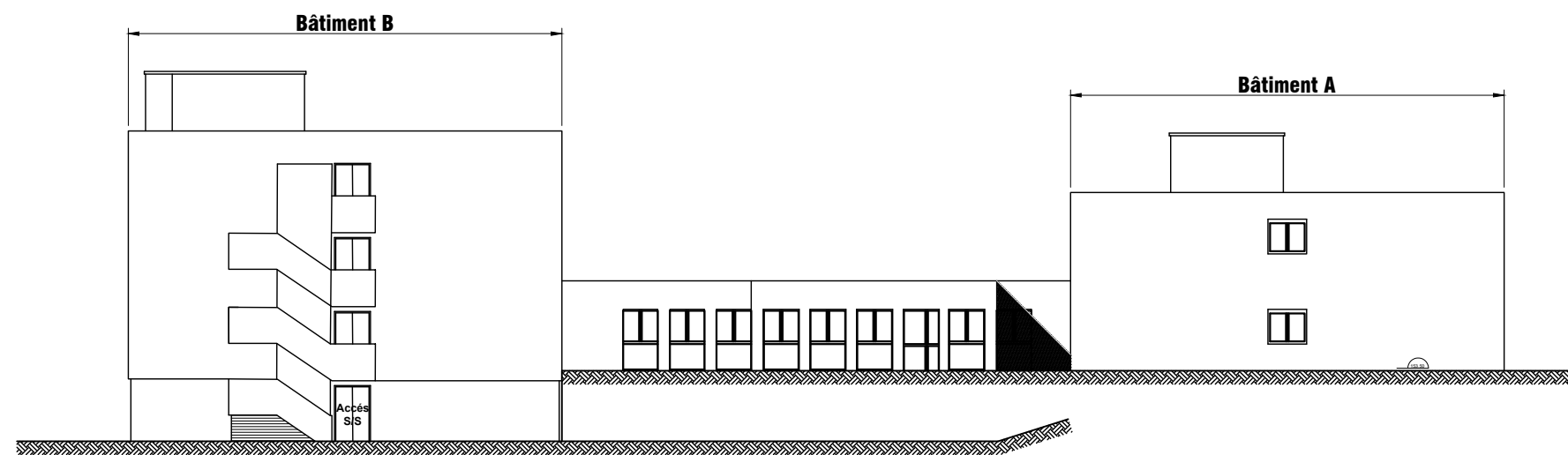
APD







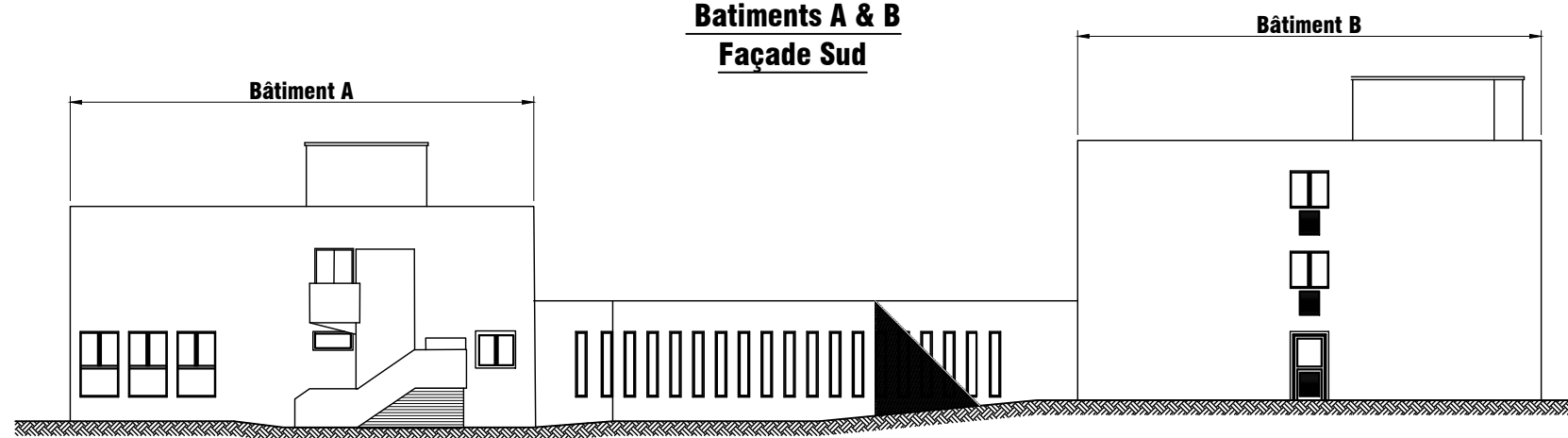




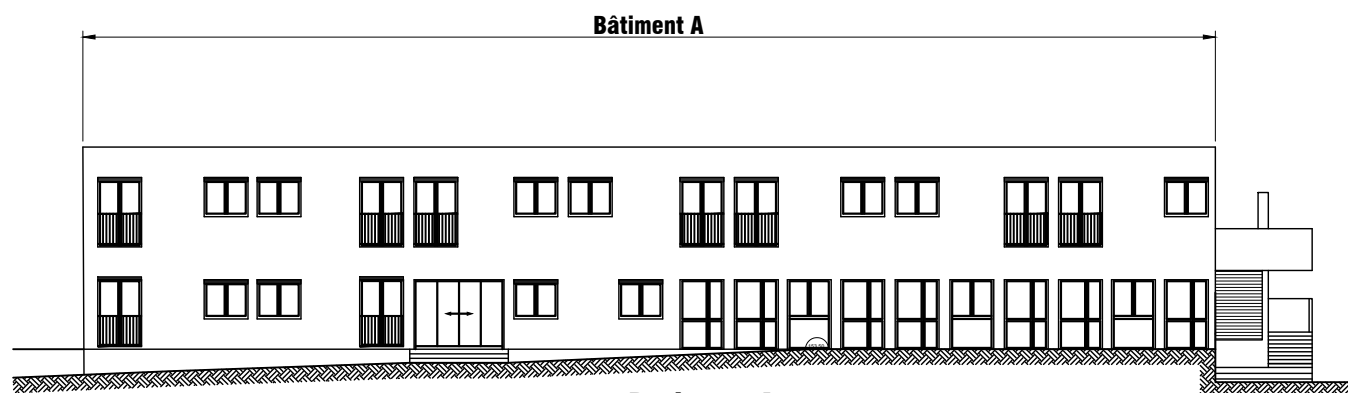
Batiments A & B
Façade Sud



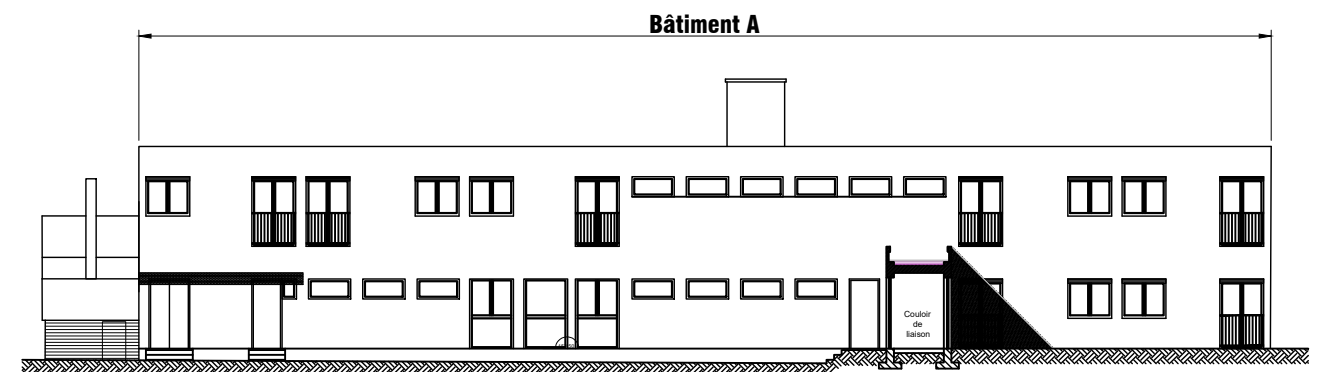
Elévations
Couloir de liaison



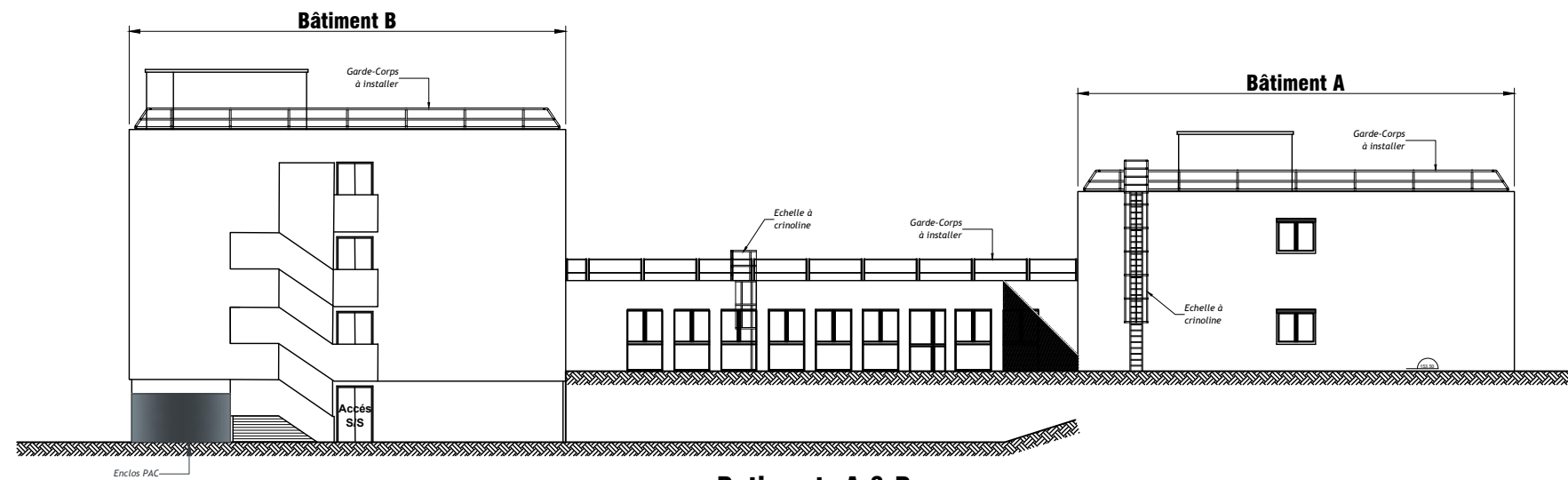
Batiments A & B
Façade Nord



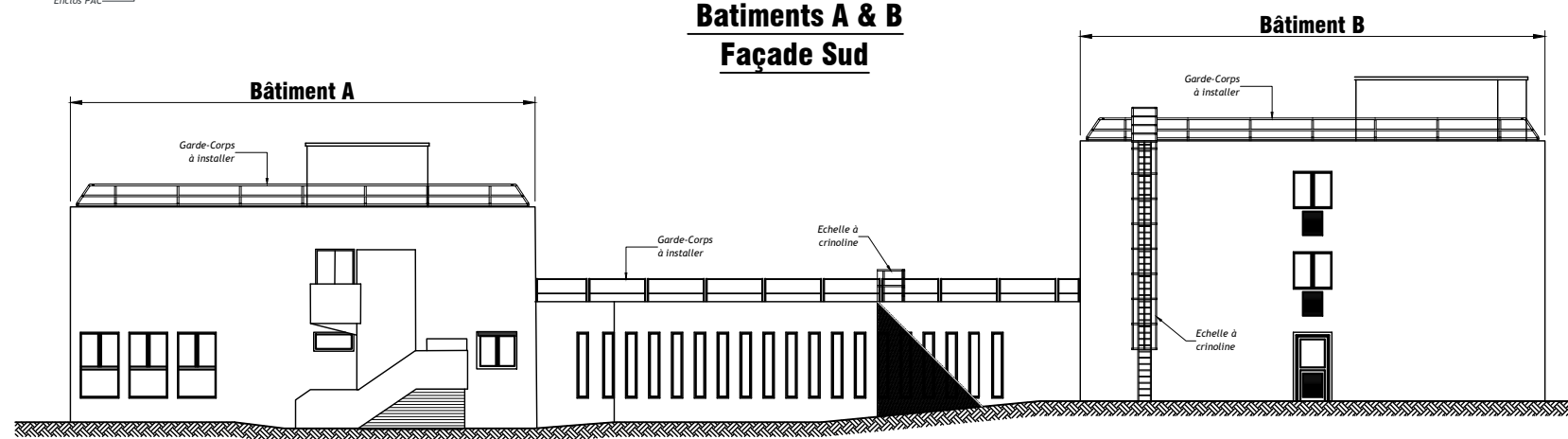
Batiment A
Façade Est



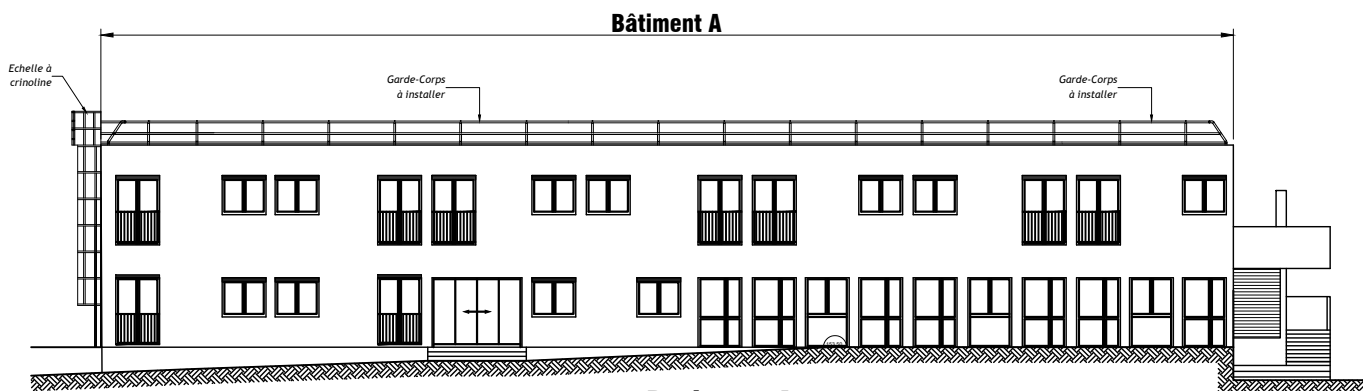
Batiment A
Façade Ouest



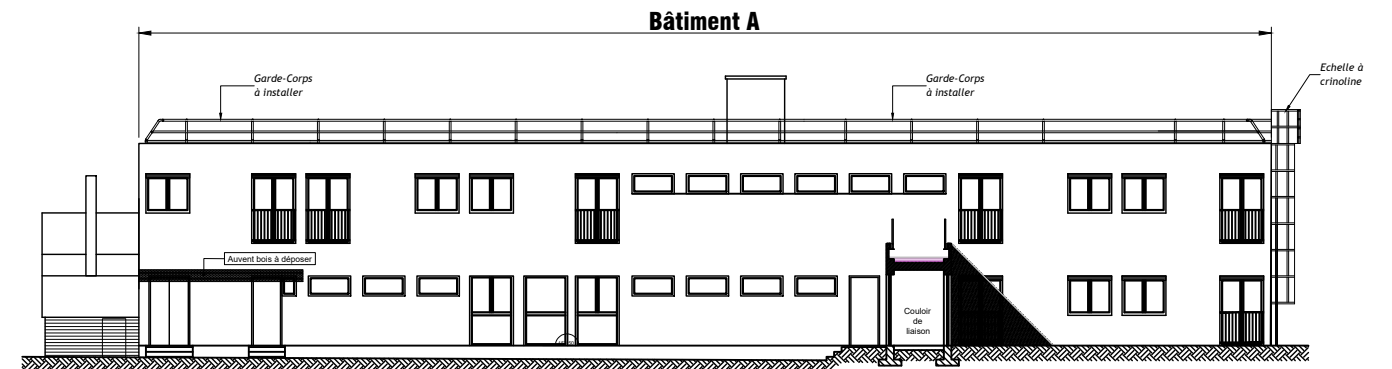
**Batiments A & B
Façade Sud**



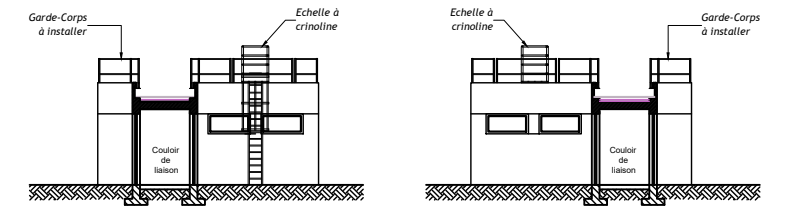
**Batiments A & B
Façade Nord**



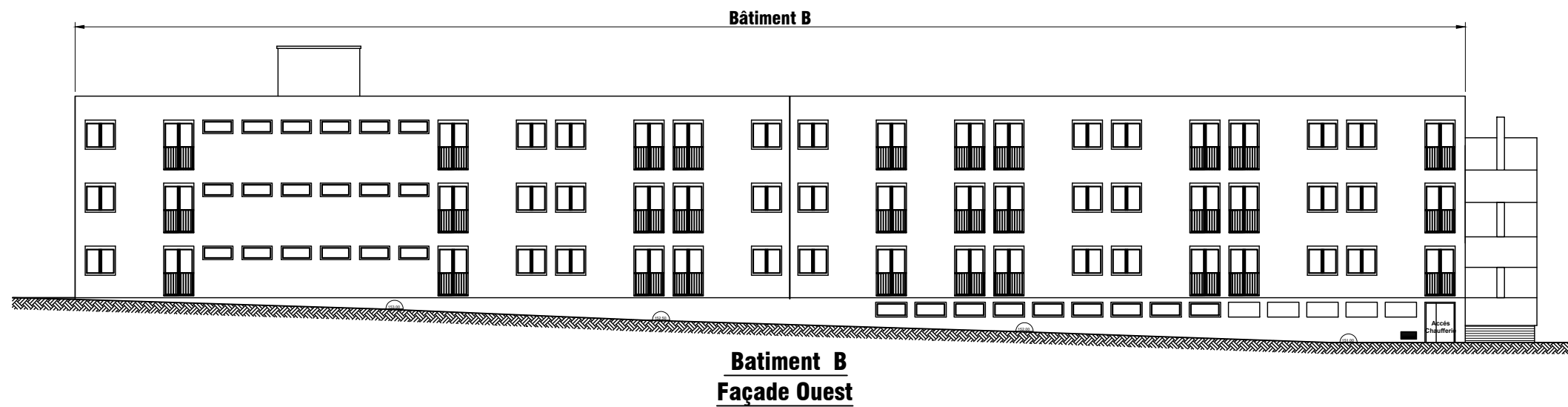
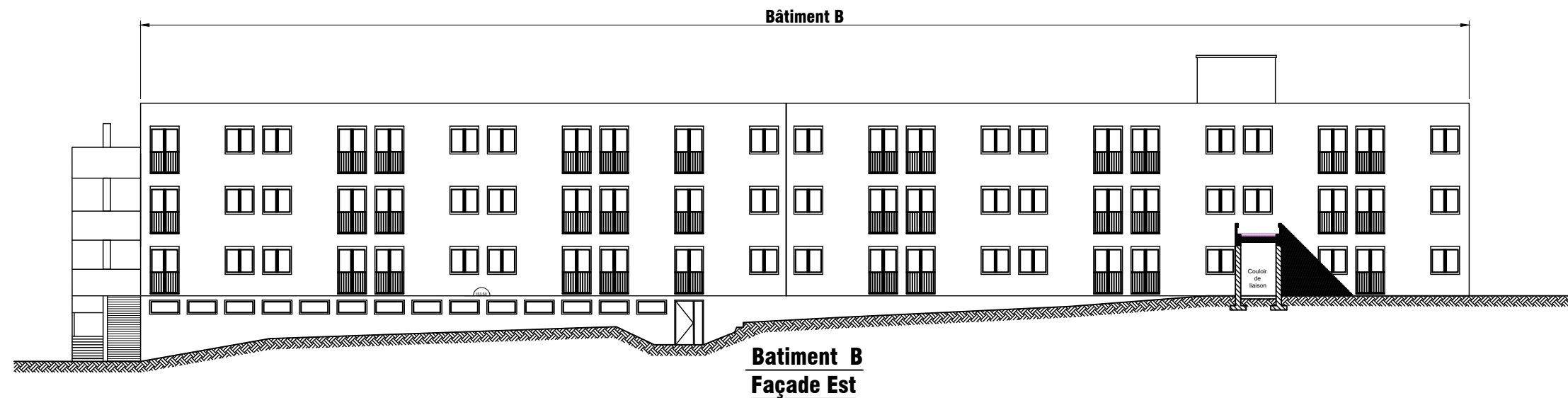
**Batiment A
Façade Est**

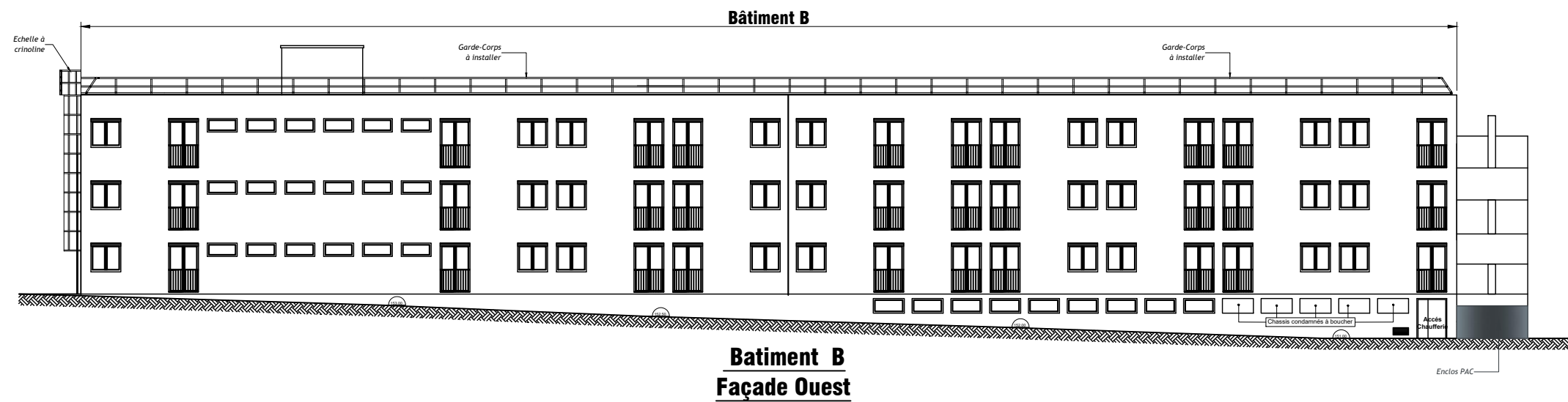
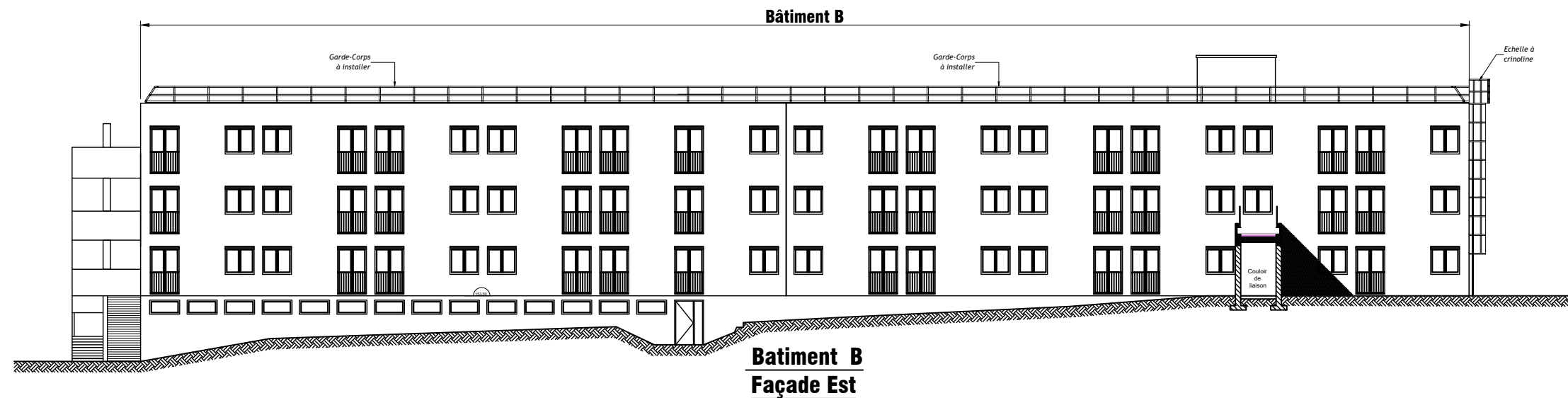


**Batiment A
Façade Ouest**



**Elévations
Coulis de liaison**







FACADE AVANT PROJETEE DU BATIMENT A



Façade
Sto 79102

Ponctuelle
Sto 79306

Soubassement
Sto 79305 x-Black

ENCLOS SUR PIGNON SUD DU BATIMENT B



**Enclos créé pour les PAC
Hauteur 1,80m
Couleur RAL 7016**



FACADE AVANT PROJETEE DU BATIMENT B



Façade
Sto 79102

Ponctuelle
Sto 79306

Soubassement
Sto 79305 x-Black